

# LDRV6-10

## 差动式溢流阀

### 说明 DESCRIPTION

A cartridge-style direct-acting differential area poppet-type relief valve

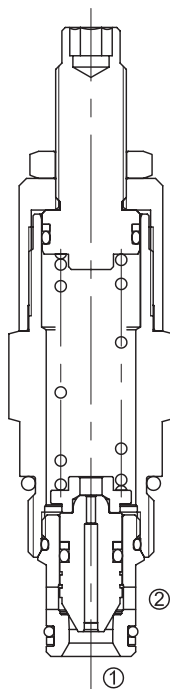
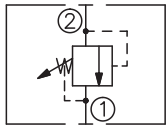
差动座阀式溢流阀

### 工作 OPERATION

The valve blocks flow from ② to ① until sufficient pressure is present at ② to force the poppet from its seat.

当②口压力达到设定压力时，从②口到①口打开，以保持系统压力不超过设定值。

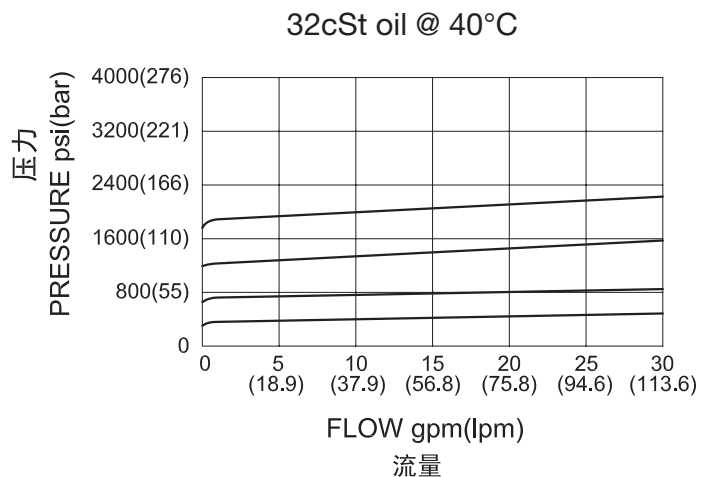
### SYMBOL



### 技术参数 SPECIFICATIONS

工作压力(Operating Pressure):	240bar
流量(Flow):	See PRESSURE DROP VS. FLOW graph.
内泄漏(Internal Leakage):	5 drops/min(滴/分). max. to 80% of nominal setting
闭合压力(Reseat Pressure):	80% of crack pressure 开启压力 (crack pressure at 0.95 lpm /0.25 gpm)
弹簧调压范围(Standard Spring Ranges):	10.34 to 41.38 bar, preset 预设定: 21bar 10.34 to 89.66 bar, preset 预设定: 45bar 17.24 to 165.52 bar, preset 预设定: 83bar 17.24 to 241.38 bar, preset 预设定: 121bar
温度(Temperature):	-40°F to +250°F(-40°C to +120°C)
过滤(Filtration):	See page (参见) N-1
油液(Fluids):	Mineral-based fluids with viscosities of 7.4 to 420 cSt.(矿物油粘度)
插孔(Cavity):	10-2, See page M-2
阀块材料(Body Material):	6061-T6 aluminum alloy rated to 207bar, Steel & Ductile iron rated to 350bar 6061-T6铝,允许使用最大压力207bar 钢和球铁允许使用最大压力350bar

### 压力 - 流量曲线 PRESSURE DROP VS.FLOW



## 订货代号 TO ORDER

**LDRV6 - 10 - \*\* - \* / \*\*\*\* - \*\***

### 1 功能

**LDRV6 = 差动式溢流阀**  
Direct-Acting Differential Area  
Poppet-Type Relief Valve

### 2 规格 Size

10=10 规格

### 3 弹簧调压范围 Spring Ranges

**6**=150-600psi(10.34-41.38bar)  
Preset:300psi(21bar)  
**13**=150-1300psi(10.34-89.66bar)  
Preset:650psi(45bar)  
**25**=250-2400psi(17.24-165.52bar)  
Preset:1200psi(83bar)  
**35**=250-3500psi(17.24-241.38Bar)  
Preset:1750psi(121bar)

### 4 调节 Adjustment

**K**= 调节手轮 1-1/2' Dia Knob  
空白 **Blank**=1/4"内六角调节杆  
for 1/4" Hex Allen Head

### 5 设定压力 Setting In Bar

空白 **Blank**= 预设定 Preset  
例 Example: 0150=150bar

### 6 阀块油口 Body Porting

空白 **Blank**= 不带阀块 None  
**6T**=SAE6  
**8T**=SAE8  
**3G**=G 3/8  
**4G**=G 1/2

※ 阀块详见章节 K-4  
其它螺纹油口也是可选择的  
Other Porting is Available

E

## 安装尺寸 INSTALLATION DIMENSIONS

Unit=Millimeters

