

LFC-06

单向节流阀

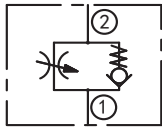
说明 DESCRIPTION

A cartridge-style adjustable flow control valve with reverse flow check
单向节流阀

工作 OPERATION

The valve varies flow restriction by adjusting needle in or out. Flow is metered from ② to ①. Free reverse flow is from ① to ②.
节流阀流量大小可通过调节螺杆来实现。②到①节流，①到②开启。

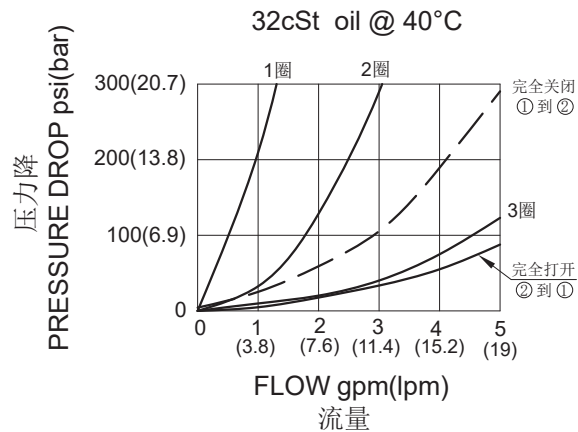
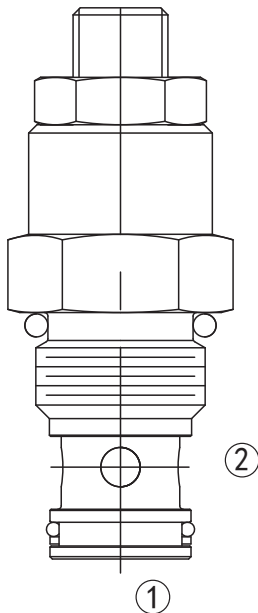
SYMBOL



技术参数 SPECIFICATIONS

最大工作压力(Max. Operating Pressure):	250bar
流量(Flow):	See PRESSURE DROP VS.FLOW graph.
内泄漏(Internal Leakage):	3 drops/min(滴/分). max. at shut-off
温度(Temperature):	-40°F to +250°F(-40°C to +120°C)
过滤(Filtration):	See Page (参见) N-1
油液(Fluids):	Mineral-based fluids with viscosities of 7.4 to 420 cSt.(矿物油粘度)
插孔(Cavity):	HYDAC FC06-2, See page M-23
阀块材料(Body Material):	6061-T6 aluminum alloy rated to 207bar, Steel & Ductile iron rated to 350bar 6061-T6铝, 允许使用最大压力207bar 钢和球铁允许使用最大压力350bar

压力 – 流量曲线 PRESSURE DROP VS.FLOW



订货代号 TO ORDER

LFC - 06 - * *

┌───┐ ┌───┐ ┌───┐
 1 2 3

- | | | |
|---|---|--|
| <p>1 功能
 LFC= 单向节流阀
 Adjustable Cartridge Flow Control Valve</p> | <p>2 规格 Size
 06=06 规格</p> | <p>3 阀块油口 Body Porting
 空白 Blank= 不带阀块 None
 4T=SAE4
 6T=SAE6
 2G=G 1/4
 3G=G 3/8</p> <p>其它螺纹油口也是可选择的
 Other Porting is Available</p> |
|---|---|--|

F

安装尺寸 INSTALLATION DIMENSIONS

Unit=Millimeters

