

LNRV-08M-2

直动式溢流阀

说明 DESCRIPTION

A cartridge-style direct-acting poppet-type relief valve
直动座阀式溢流阀

工作 OPERATION

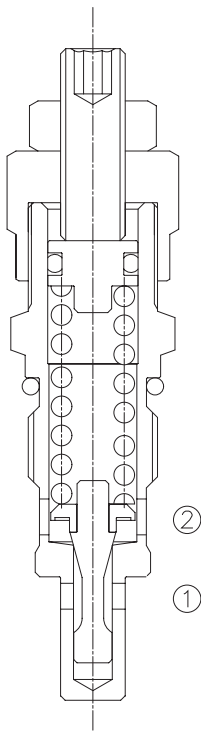
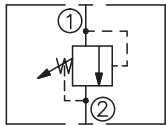
Flow is blocked from ① to ② until pressure increases to meet the selected valve setting, lifting the poppet from its seat and allowing relief flow through ② to tank. Pressure at ② is additive to the relief setting of the valve. The unique poppet design provides enhanced stability at all flows and pressures.

当①口压力达到设定压力时，从①口到②口打开，以防止系统过载。②口的背压叠加到弹簧设定值上。独特的阀芯设计增强了溢流阀的稳定性。

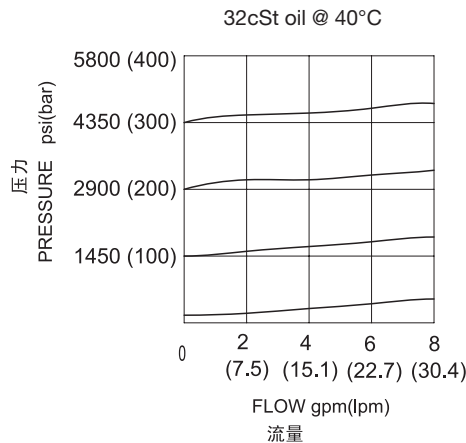
技术参数 SPECIFICATIONS

工作压力(Operating Pressure):	350bar
流量(Flow):	See PRESSURE DROP VS. FLOW graph.
内泄漏(Internal Leakage):	5 drops/min(滴/分). max. to 85% of nominal setting
闭合压力(Reseat Pressure):	85% of crack pressure 开启压力 (crack pressure at 0.95 lpm /0.25 gpm)
弹簧调压范围(Standard Spring Ranges):	5 to 50 bar; preset(预设)30 bar 30 to 100 bar ; preset(预设)70 bar 50 to 210 bar ; preset(预设)160 bar 100 to 350 bar ; preset(预设)250 bar
温度(Temperature):	-40°F to +250°F(-40°C to +120°C)
过滤(Filtration):	See page (参见) N-1
油液(Fluids):	Mineral-based fluids with viscosities of 7.4 to 420 cSt.(矿物油粘度)
插孔(Cavity):	08M-2, See page M-17
阀块材料(Body Material):	Steel & Ductile iron rated to 350bar 钢和球铁允许使用最大压力350bar

SYMBOL



压力 – 流量曲线 PRESSURE DROP VS.FLOW



订货代号 TO ORDER

LNRV - 08M - 2 - * / * * * * - * *

1

2

3

4

5

<p>1 功能 LNRV= 直动式溢流阀 Direct-acting Relief Valve</p>	<p>3 弹簧调压 Spring Ranges 7=70-700psi(5-50bar) Preset:440psi(30bar) 14=440-1400psi(30-100bar) Preset:1000psi(70bar) 30=730-3000psi(50-210bar) Preset:2320psi(160bar) 50=1450-5000psi(100-350bar) Preset:3630psi(250bar)</p>	<p>5 阀块油口 Body Porting 空白 Blank= 不带阀块 None 6T=SAE 6 8T=SAE 8</p>
<p>2 规格 Size 08M-2=08M-2 规格</p>	<p>4 设定压力 Setting In Bar 空白 Blank= 预设定 Preset (Example:0250=250bar)</p>	<p>其它螺纹油口也是可选择的 Other Porting is Available</p>

安装尺寸 INSTALLATION DIMENSIONS

Unit=Millimeters

