

LDRJ

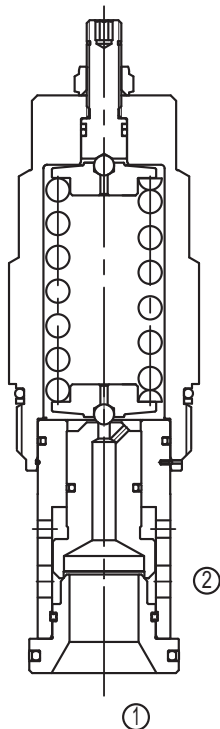
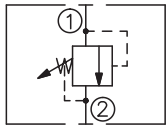
直动式溢流阀

说明 DESCRIPTION

A cartridge-style direct-acting relief valve

直动式溢流阀

SYMBOL



工作 OPERATION

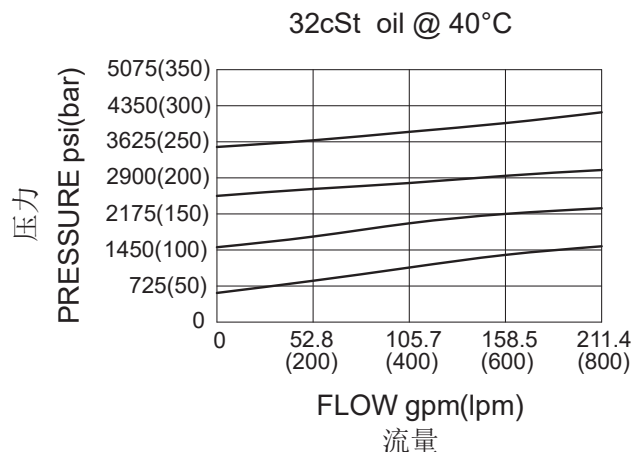
The valve is normally closed, pressure-limiting valves used to protect hydraulic components from pressure transients. When the pressure at the inlet (port ①) reaches the valve setting, the valve starts to open to tank (port ②), throttling flow to limit the pressure rise. These valves are smooth and quiet, essentially zero leak, dirt tolerant, immune to silting and are very fast.

此阀为常闭压力限制阀，常用来保护液压元件，以防止其受瞬态压力的冲击。当压力在进口（油口①）达到阀的设定值，阀开始向油箱（油口②）溢流，节流以限制压力上升。此类阀调节平稳、噪声小，基本为零泄漏，抗油污能力强，防堵塞并且响应速度快。

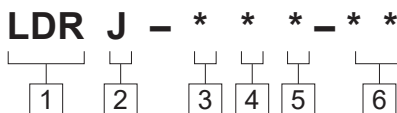
技术参数 SPECIFICATIONS

工作压力(Operating Pressure):	350bar
流量(Capacity):	See PRESSURE DROP VS.FLOW graph.
回座时最大泄漏(Maximum valve leakage at reseal):	10drops/min(滴/分)
闭合压力(Reseat Pressure):	>80% of setting pressure(设定压力)
弹簧调压范围(Standard Spring Ranges):	A 35-210bar; Preset (预设) : 70bar B 20-105bar; Preset (预设) : 70bar C 70-420bar; Preset (预设) : 70bar D 14-55bar; Preset (预设) : 28bar E 7-28bar; Preset (预设) : 14bar W 55-315bar; Preset (预设) : 70bar S 3.5-14bar; Preset (预设) : 7bar
温度(Temperature):	-40°F to +250°F(-40°C to +120°C)
过滤(Filtration):	See Page (参见) N-1
油液(Fluids):	Mineral-based fluids with viscosities of 7.4 to 420 cSt. (矿物油粘度)
插孔(Cavity):	SUN T-18A, See page M-8
阀块材料(Body Material):	Steel & Ductile iron rated to 350bar 钢和球铁允许使用最大压力350bar

压力 - 流量曲线 PRESSURE DROP VS.FLOW



订货代号 TO ORDER



- | | | |
|--|---|---|
| <p>1 功能
LDR= 直动式溢流阀
Direct-Acting Relief Valve</p> | <p>4 弹簧调压范围 Spring Ranges
A=500-3000psi(35-210bar) Preset:1000psi(70bar)
B=300-1500psi(20-105bar) Preset:1000psi(70bar)
C=1000-6000psi(70-420bar) Preset:1000psi(70bar)
D=200-800psi(14-55bar) Preset:400psi(28bar)
E=100-400psi(7-28bar) Preset:200psi(14bar)
W=800-4500psi(55-315bar) Preset:1000psi(70bar)
S=50-200psi(3.5-14bar) Preset:100psi(7bar)
Factory pressure setting established at 15L/min;
工厂的设定是指溢流阀开启 [流量为 15L/min] 时的压力;</p> | <p>6 阀块油口 Body Porting
空白 Blank= 不带阀块 None
12T=SAE12
16T=SAE16
6G=G 3/4
8G=G 1</p> |
| <p>2 流量 Capacity
J=760L/min</p> | <p>5 油封 Seal Kits
N= 丁晴橡胶 Buna N
V= 氟橡胶 Viton</p> | <p>※ 阀块详见章节 K-33
其它螺纹油口也是可选择的
Other Porting is Available</p> |
| <p>3 控制方式 Control
L= 标准螺钉调节
Standard Screw Adjustment</p> | | |

安装尺寸 INSTALLATION DIMENSIONS

Unit=Millimeters

