

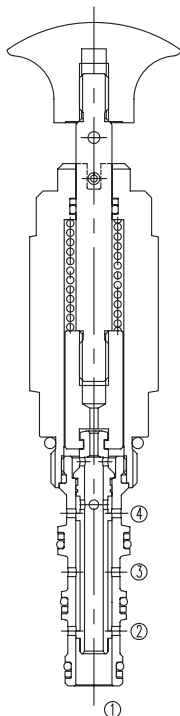
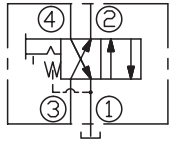
LMP-08-4-L

手动换向阀

说明 DESCRIPTION

A cartridge-style manual 4-way, pull-to-shift, directional valve.
四通手动换向阀

SYMBOL



工作 OPERATION

In its steady-state, spring-offset position, the valve directs flow from ③ to ②, and from ④ to ①. In the actuated (pulled) position, the cartridge directs flow from ③ to ④, and from ② to ①. The spring chamber is vented at ①.

Note: Pressure at port ① will directly act on the spool and spring. Port ① is intended to be a tank port only. Series operation is prohibited due to the tank port ① pressure rating.

A unique pull-and-rotate feature for holding the positive actuated position is optional. A 90° rotation is required to position at the hold slot. The valve resets to spring-return de-actuated with a slight pull and a 90° turn from the locked actuated position.

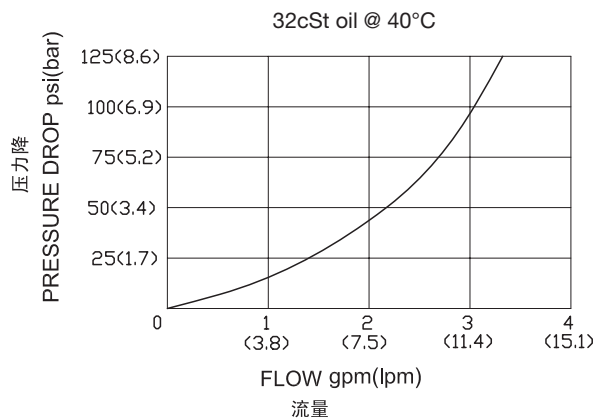
在初始时，弹簧复位，此阀允许油液从③流向②，然后从④流向①。在接通（拉开）位置时，油液从③流向④，然后从②流向①。弹簧室泄油孔接通①。

注：油口①的压力将直接作用在阀芯和弹簧上。油口①只作为油箱接口。可以采用独特的拉动旋转功能来保持接通阀位。要在固定槽内定位，需要将手柄旋转90°。轻轻拉动手柄并从锁定阀位旋转90°后，弹簧复位，油液通道关闭。由于油箱油口①的额定压力，因此禁止串联使用。

技术参数 SPECIFICATIONS

工作压力(Operating pressure):	207bar 油口②、③和④(On②,③and④): 240bar 油口①最大压力(On①Max.): 最大为14bar
流量(Flow):	See PRESSURE DROP VS.FLOW graph.
内泄漏(Internal Leakage):	82 cc/min.(毫升/分) max.
温度(Temperature):	-40°F to +250°F(-40°C to +120°C)
过滤(Filtration):	See page (参见) N-1
油液(Fluids):	Mineral-based fluids with viscosities of 7.4 to 420 cSt.(矿物油粘度)
插孔(Cavity):	08-4, See page M-1
阀块材料(Body Material):	6061-T6 aluminum alloy rated to 207bar, Steel & Ductile iron rated to 350bar 6061-T6铝,允许使用最大压力207bar 钢和球铁允许使用最大压力350bar

压力 - 流量曲线 PRESSURE DROP VS.FLOW



订货代号 TO ORDER

LMP - 08 - 4 - L - * *

┌───┐
1

┌───┐
2

┌───┐
3

┌───┐
4

1 功能
LMP= 手动换向阀 Manual, Spring
Return, Pull-to-shift

2 规格 Size
08=08 规格

3 流道类型 Flow Path
4= 四通

4 阀块油口 Body Porting
空白 Blank= 不带阀块 None
4T=SAE4
6T=SAE6
2G=G 1/4
3G=G 3/8

※ 阀块详见章节 K-3
其它螺纹油口也是可选择的
Other Porting is Available

D

安装尺寸 INSTALLATION DIMENSIONS

Unit=Millimeters

