

# LMR-10-3

## 手动旋转阀

### 说明 DESCRIPTION

A cartridge-style manual rotary 3-way directional valve  
二位，三通，转动换向阀

### 工作 OPERATION

This valve will direct flow between ports ① and ③ and block port ② in extreme counter clockwise, and by turning the operator 90°, (in extreme clockwise Position) flow will be directed between port ① and ②, port ③ will be blocked.

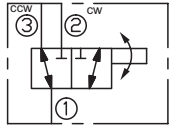
During cross-over transition, all ports are blocked.

在逆时针极限位置，①口与③口通，②口不通；

旋转旋钮 90°，在顺时针极限位置，①口与②口通，③口不通。

在换向过程中，所有油口都不通。

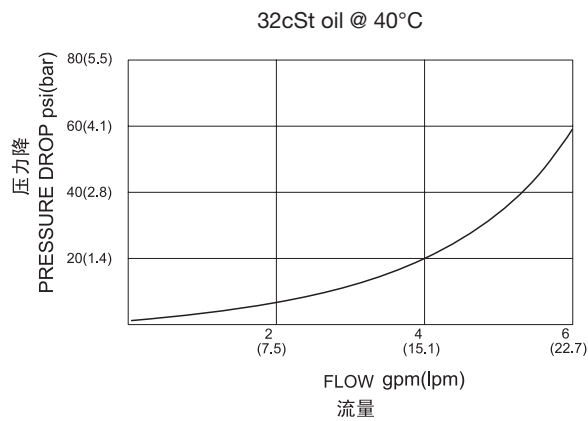
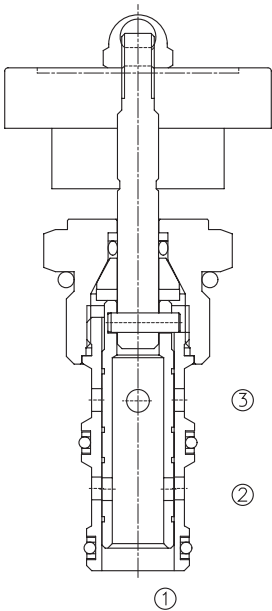
### SYMBOL



### 技术参数 SPECIFICATIONS

工作压力(Operating pressure):	210bar
流量(Flow):	See PRESSURE DROP VS.FLOW graph.
内泄漏(Internal Leakage):	164 cc/min. max. at 210bar
温度(Temperature):	-40°F to +250°F(-40°C to +120°C)
过滤(Filtration):	See page (参见) N-1
油液(Fluids):	Mineral-based fluids with viscosities of 7.4 to 420 cSt.(矿物油粘度)
插孔(Cavity):	10-3, See page M-2
阀块材料(Body Material):	6061-T6 aluminum alloy rated to 207bar, Steel & Ductile iron rated to 350bar 6061-T6铝,允许使用最大压力207bar 钢和球铁允许使用最大压力350bar

### 压力 – 流量曲线 PRESSURE DROP VS.FLOW



## 订货代号 TO ORDER

**LMR - 10 - 3 - \* \***

┌───┐
┌───┐
┌───┐
┌───┐  
1
2
3
4

**1** 功能  
LMR= 手动旋转阀 Manual, Rotary Valve

**3** 流道类型 Flow Path  
3= 三通

**4** 阀块油口 Body Porting  
空白 Blank= 不带阀块 None  
6T=SAE6  
8T=SAE8  
2G=G 1/4  
3G=G 3/8

**2** 规格 Size  
10=10 规格

※ 阀块详见章节 K-5  
其它螺纹油口也是可选择的  
Other Porting is Available

D

## 安装尺寸 INSTALLATION DIMENSIONS

Unit=Millimeters

