

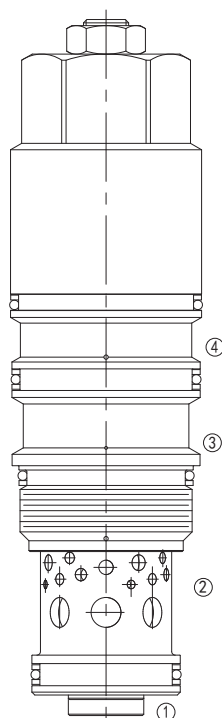
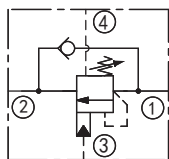
# LMWIA

## 负载控制阀

### 说明 DESCRIPTION

A cartridge-style vented, load reactive, load control valve  
负载控制阀

### SYMBOL



### 工作 OPERATION

Vented, load reactive load control valves with pilot assist combine two valves: a check valve and a relief valve. The check valve allows free flow from port ② to port ① while a direct-acting, pilot-assisted relief valve controls flow from port ① to port ②. Pilot assist at port ③ lowers the effective setting of the relief valve at a rate determined by the pilot ratio. Backpressure at port ② does not affect the valve setting because the spring chamber references the vent (port ④).

带外接口及先导协助开启的负载控制阀，具有负载反作用，它结合了单向阀与溢流阀功能。允许油液从②口到①口单向自由流动；同时直动式，先导协助溢流阀功能可以控制从①口到②口的液流。③口的先导协助以先导比率的作用系数降低了溢流功能的有效设定值。因弹簧腔通外接口（④口），②口的背压不会影响阀的设定值。

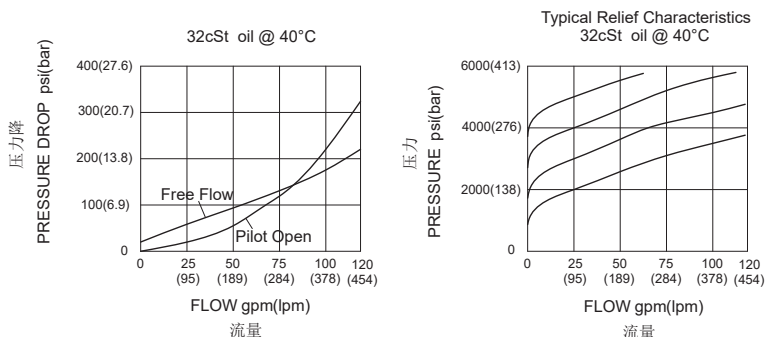
### 特性 FEATURES

- Load control valves should be set at least 1.3 times the maximum load induced pressure. (1.5 times when the setting is less than 140 bar)  
设定压力至少为最大负载压力的 1.3 倍（当设定低于 140bar 时，设定值则为最大负载压力的 1.5 倍）。
- Reseat exceeds 77% of set pressure when the valve is standard set. Setting lower than the standard set pressure may result in lower reseal percentages.  
标准设定时，闭合压力值大于设定压力值的 77%；低于标准设定，则闭合压力值的百分比相应降低。
- This valve is functionally a 4-port counterbalance valve. It seats as a poppet valve and modulates as a spool valve, offering the best of both valve types.  
此阀功能上是④口平衡阀。阀座形式是锥阀结构，动作调节过程又是滑阀结构，集结了两种结构的优点。
- This valve has full relief capacity.  
此阀有完全的溢流能力。
- Factory pressure setting established at 30cc/min(2 in<sup>3</sup>/min).  
工厂的设定是指当溢流阀开启（流量为 30cc/min）时的压力。

### 技术参数 SPECIFICATIONS

最大设定值(Max. Setting):	350 bar
最大负载(Max. Recommended Load Pressure at Max. Setting):	265 bar
流量(Flow) :	See PRESSURE DROP VS.FLOW graph.
内泄漏(Internal Leakage):	5 drops/min.(滴/分)
控制比(Pilot Rate):	3:1
单向阀开启压力(Check Cracking Pressure):	1.7 bar
温度(Temperature):	-40°F to +250°F(-40°C to +120°C)
过滤(Filtration):	See Page (参见) N-1
油液(Fluids):	Mineral-based fluids with viscosities of 7.4 to 420 cSt.(矿物油粘度)
插孔(Cavity):	SUN T-24A, See page M-33
阀块材料(Body Material):	6061-T6 aluminum alloy rated to 207bar, Steel & Ductile iron rated to 350bar 6061-T6铝，允许使用最大压力207bar 钢和球铁允许使用最大压力350bar

### 压力 - 流量曲线 PRESSURE DROP VS.FLOW



## 订货代号 TO ORDER

LMW \* \* - \* \* \* - \* \*

1 2 3 4 5 6 7

- |  |   |  |
|--|---|--|
| <p><b>1 功能</b><br/>LMW= 负载控制平衡阀<br/>Load Control Valve</p>               | <p><b>5 弹簧调压范围 Spring Ranges</b><br/>H=1000-4000psi(70-280bar)<br/>Preset:3000psi(210bar)<br/>J=2000-5000psi(140-350bar)<br/>Preset:3000psi(210bar)</p> | <p><b>7 阀块油口 Body Porting</b><br/>空白 Blank= 不带阀块 None<br/>16T=SAE16<br/>20T=SAE20<br/>8G=G 1<br/>10G=G 1/4</p> |
| <p><b>2 流量 Flow</b><br/>I=480L/min</p>                                   | <p><b>6 油封 Seal Kits</b><br/>N= 丁腈橡胶 Buna N<br/>V= 氟橡胶 Viton</p>  | <p>其它螺纹油口也是可选择的<br/>Other Porting is Available</p>   |
| <p><b>3 控制比 Pilot Ratio</b><br/>A=3:1</p>                                |   |  |
| <p><b>4 控制方式 Control</b><br/>L= 标准螺钉调节<br/>Standard Screw Adjustment</p> |   |  |



## 安装尺寸 INSTALLATION DIMENSIONS

Unit=Millimeters

