

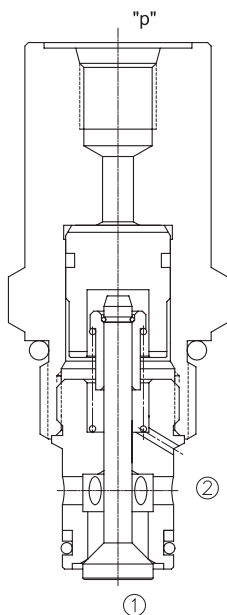
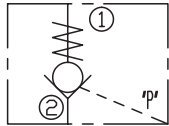
# LPCX-10

## 液控单向阀

### 说明 DESCRIPTION

A cartridge-style pilot-to-open poppet-type check valve  
锥阀式液控单向阀

### SYMBOL



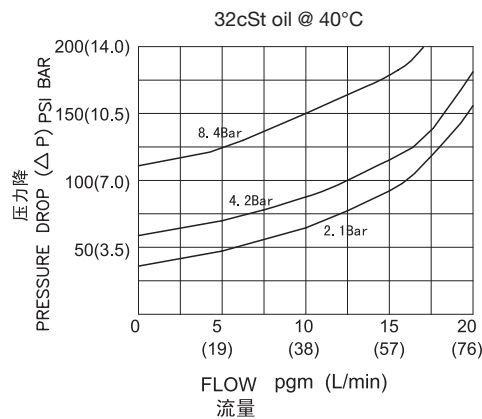
### 工作 OPERATION

The valve allows flow from ② to ①, while normally blocking flow from ① to ②. Flow will be allowed from ① to ② when sufficient pressure is applied at port “P”.  
The cartridge has a 3:1 pilot ratio, meaning that at least one-third of the load pressure held at ① is required at “P” to open the valve.  
当在②口的压力超过开启压力，②到①开启；在反方向，①到②关闭；  
当在 P 口所需的液压力达到①口负载的 1/3 时，阀芯打开，①和②通，液控比为 3:1。

### 技术参数 SPECIFICATIONS

最大工作压力(Max.Operating Pressure):	350bar
流量(Flow):	See PRESSURE DROP VS.FLOW graph.
内泄漏(Internal Leakage):	2 drops/min(滴/分). max. at 350bar
开启压力(Crack Pressures):	2.1=2.1bar 4.2=4.2bar 8.4=8.4bar
控制比(Pilot Ratio):	3:1
温度(Temperature):	-40°F to +250°F(-40°C to +120°C)
过滤(Filtration):	See page (参见) N-1
油液(Fluids):	Mineral-based fluids with viscosities of 7.4 to 420 cSt.(矿物油粘度)
插孔(Cavity):	10-2,See page M-2
阀块材料(Body Material):	Steel & Ductile iron rated to 350bar 钢和球铁允许使用最大压力350bar

### 压力 – 流量曲线 PRESSURE DROP VS.FLOW



## 订货代号 TO ORDER

**LPC X - 10 - \* \* - \* \* - \* \***  

└──┘
└──┘
└──┘
└──┘
└──┘
└──┘

1
2
3
4
5
6

<p><b>1</b> 功能 LPC= 液控单向阀 Pilot to Open Check Valve</p>	<p><b>4</b> 先导口 "P" 油口 ="P"PILOT PORT 4T=SAE4</p>	<p><b>6</b> 阀块油口 <b>Body Porting</b> 空白 Blank= 不带阀块 None 6T=SAE6 8T=SAE8 3G=G 3/8 4G=G 1/2</p>
<p><b>2</b> 液控口位置 <b>Pilot Port Part</b> X=TAIL PART 在外部</p>	<p><b>5</b> 开启压力 <b>Cracking Pressure</b> 2.1=2.1bar 4.2=4.2bar 8.4=8.4bar</p>	<p>※ 阀块详见章节 K-4 其它螺纹油口也是可选择的 Other Porting is Available</p>
<p><b>3</b> 规格 <b>Size</b> 10=10 规格</p>		

D

## 安装尺寸 INSTALLATION DIMENSIONS

Unit=Millimeters

