

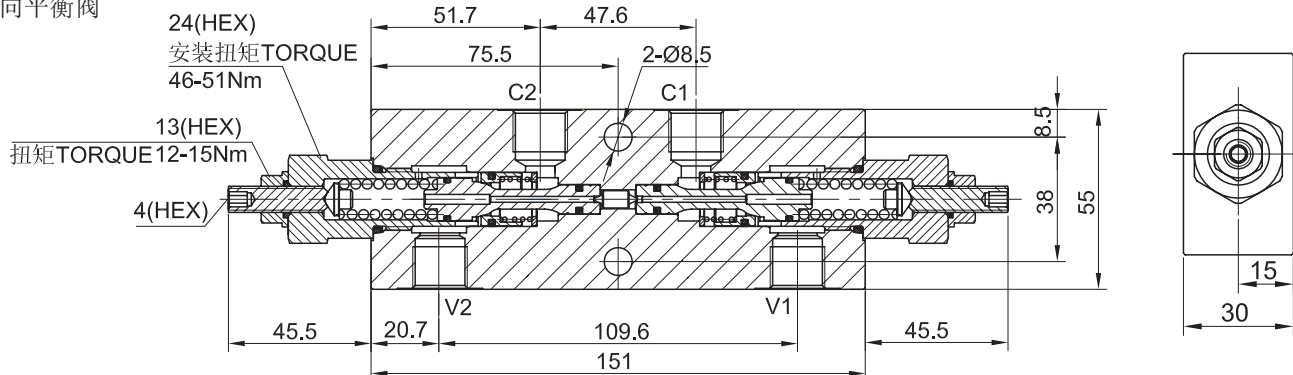
# DCB-LMB-DE30G-3G

## 双向平衡阀组

### 说明 DESCRIPTION

Dual counterbalance manifolds

双向平衡阀

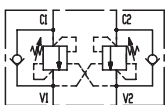


### 工作 OPERATION

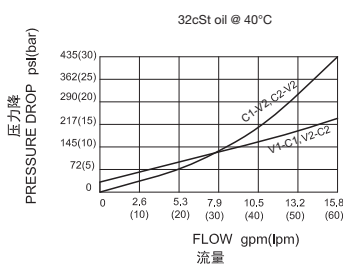
It provides static and dynamic control of load by regulating the flow IN and OUT of the actuator, through ports C1 and C2. This valve module includes 2 sections, each one composed by a check and a relief valve pilot assisted by pressure in the opposite line: the check section allows free flow into actuator, then locks the load against reverse movement; with pilot pressure applied at line across, the pressure setting of the relief is reduced in proportion to the stated ratio until opening and allowing controlled reverse flow. Back-pressure at V1 or V2 is additive to pressure settings in all functions.

双向平衡阀对流入和流出执行机构的油液进行动静态负载控制。这个阀组分两个部分，每个部分包含一个单向阀和一个由对面油路先导控制的溢流阀；单向阀允许油液自由进入执行机构，反向关闭；通过作用于对面油路的先导压力，使得溢流阀的压力设定按照液控比降低，直至溢流阀开启，从而允许油液反向流动。作用于V1或V2的背压叠加到溢流阀的设定值上。

### SYMBOL



### 压力 - 流量曲线 PRESSURE DROP VS.FLOW

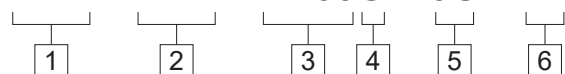


### 技术参数 SPECIFICATIONS

最大工作压力(Max.Operating Pressure):	350bar
流量(Flow):	See PRESSURE DROP VS.FLOW graph.
控制比(Pilot Ratio):	4.2:1
内泄漏(Internal Leakage):	5 drops/min(滴/分). at nominal pressure
温度(Temperature):	-40°F to +250°F(-40°C to +120°C)
过滤(Filtration):	See page (参见) N-1
油液(Fluids): Mineral-based fluids with viscosities of 7.4 to 420 cSt.(矿物油粘度)	
阀块材料(Body Material):	Steel & Ductile iron rated to 350bar 钢和球铁允许使用最大压力350bar

### 订货代号 TO ORDER

DCB - LMB - DE30G - 3G - \* \*



1 功能 DCB= 双向平衡阀 Dual Counterbalance	5 阀块油口 Body Porting 3G=G 3/8 其它螺纹油口也是可选择的 Other Porting is Available	6 调压范围 Spring Ranges 35=1450-5000psi(100-350bar) Preset:5000psi(350bar) 130bar/ 圈 21=870-3000psi(60-210bar) Preset:3000psi(210bar) 65bar/ 圈 固定设定值 psi(bar) Q=5l/min
2 连接类型 ConnectionType		
3 规格 Size		
4 液控比 Pilot Ratio G=4.2:1		