

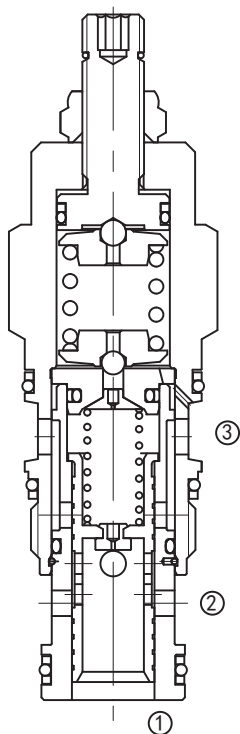
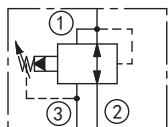
LPPFB

先导式减压 / 溢流阀

说明 DESCRIPTION

A cartridge-style pilot-operated pressure reducing/relieving valve
先导式减压 / 溢流阀

SYMBOL



工作 OPERATION

Pilot-operated, pressure reducing/relieving valves reduce a high primary pressure at the inlet (port ②) to a constant reduced pressure at port ①, with a full-flow relief function from port ① to tank (port ③). Pressure at port ③ is directly additive to the valve setting at a 1:1 ratio and should not exceed 210 bar.

先导式减压 / 溢流阀将②口初始高压减压到①口，①口可得到稳定不变的压力值，同时具有从①口到③口的全流量溢流功能。③口处的压力按 1:1 叠加到阀的设定值上，且③口处的压力不能超出 210 bar。

Recommended maximum inlet pressure is determined by the adjustment range. Ranges D, E, N, and Q are tested with a 2000 psi (140 bar) maximum differential between inlet and reduced pressure.

Ranges A, B, and H are tested with a 3000 psi (210 bar) maximum differential between inlet and reduced pressure.

Ranges C and W are tested with 5000 psi (350 bar) of inlet pressure.

此阀推荐的②口最大压力是由减压阀的弹簧调节范围而定的。

弹簧调节范围：D, E, N 和 Q，②口和①口的最大允许压差为 140Bar；

弹簧调节范围：A, B 和 H，②口和①口的最大允许压差为 210Bar；

弹簧调节范围：C 和 W，是由进油口最大压力 350bar 来测试的；

例：弹簧调节范围 D (1.7-55bar)，最大允许压差为 140bar，若①口设定为 50bar，则②口最大允许压力为：190bar。

技术参数 SPECIFICATIONS

最大工作压力(Max.Operating Pressure): 350bar

流量(Flow): See PRESSURE DROP VS.FLOW graph.

弹簧调压范围(Standard Spring Ranges):

A:	7-210bar, preset 预设定: 14bar
B:	3.5-105bar, preset 预设定: 14bar
N:	4- 55bar, preset 预设定: 14bar
Q:	4- 28bar, preset 预设定: 14bar
W:	10.5-315bar, preset 预设定: 14bar

附加选项(Additional Options):

D:	1.7-55bar, preset 预设定: 14bar
E:	1.7-28bar, preset 预设定: 14bar
H:	2-210bar, preset 预设定: 14bar
J:	1.7-105bar, preset 预设定: 14bar
K:	5-105bar, preset 预设定: 14bar
S:	1.7-14bar, preset 预设定: 7bar

温度(Temperature): -40°F to +250°F (-40 °C to +120 °C)

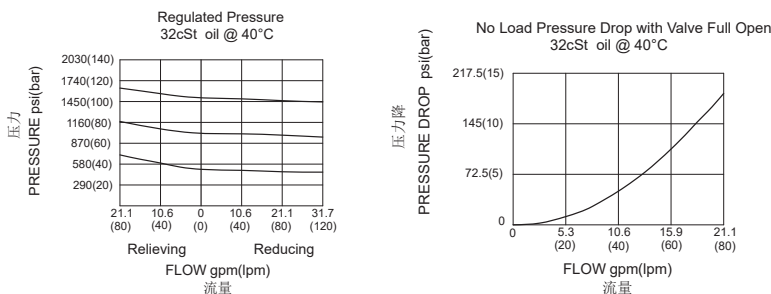
过滤(Filtration): See page (参见) N-1

油液(Fluids): Mineral-based fluids with viscosities of 7.4 to 420 cSt.(矿物油粘度)

插孔(Cavity): T-2A, See page M-6

阀块材料(Body Material):
Steel & Ductile iron rated to 350Bar 钢和球铁允许使用最大压力350bar

压力 - 流量曲线 PRESSURE DROP VS.FLOW



订货代号 TO ORDER

L P P F B - * * * - * *

┌───┐
1

┌───┐
2

┌───┐┌───┐┌───┐
3 4 5

┌───┐
6

1 功能

LPP= 先导式减压 / 溢流阀
Pilot-operated Pressure
Reducing/Relieving Valve

2 流量 Capacity

F=80L/min

3 控制方式 Control

L= 标准螺钉调节
Standard screw Adjustment

4 弹簧调压范围 Spring Ranges

A=100-3000psi(7-210bar)
Preset:200psi(14bar)
W=150-4500psi(10.5-315bar)
Preset:200psi(14bar)
B=50-1500psi(3.5-105bar)
Preset:200psi(14bar)
N=60-800psi(4-55bar)
Preset:200psi(14bar)
Q=60-400psi(4-28bar)
Preset:200psi(14bar)

5 油封 Seal Kits

N= 丁腈橡胶 Buna N
V= 氟橡胶 Viton

6 阀块油口 Body Porting

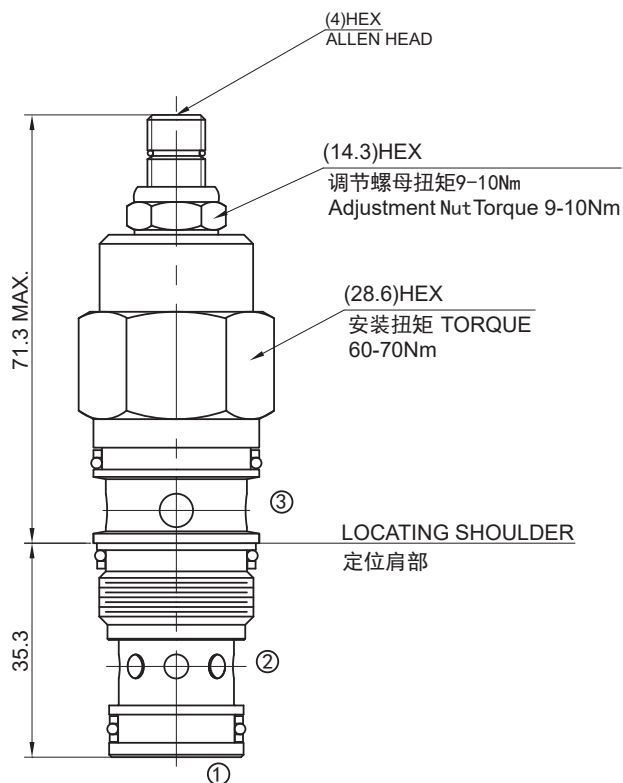
空白 Blank= 不带阀块 None
8T=SAE8
10T=SAE10
3G=G 3/8
4G=G 1/2

※ 阀块详见章节 K-23
其它螺纹油口也是可选择的
Other Porting is Available

E

安装尺寸 INSTALLATION DIMENSIONS

Unit=Millimeters



附加选项 Additional Options

D=25-800psi(1.7-55bar)
Preset:200psi(14bar)
E=25-400psi(1.7-28bar)
Preset:200psi(14bar)
H=30-3000psi(2-210bar)
Preset:200psi(14bar)
J=25-1500psi(1.7-105bar)
Preset:200psi(14bar)
K=75-1500psi(5-105bar)
Preset:200psi(14bar)
S=25-200psi(1.7-14bar)
Preset:100psi(7bar)