

LPSRV-10

先导式溢流阀

说明 DESCRIPTION

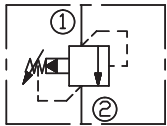
A cartridge-style pilot-operated spool-type relief valve
先导滑阀式溢流阀

工作 OPERATION

The valve prevents flow from ① to ② until pressure at ① exceeds the set crack pressure and opens the pilot section. The pilot flow creates a pressure differential across the spool which causes the valve to open allowing flow from ① to ② protecting the circuit from over pressurization.

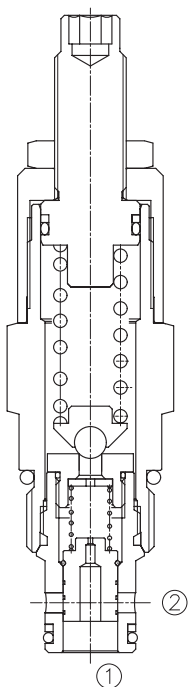
阀体①口和②口不通，直到①口压力超过设定压力且打开先导阀芯。这样，先导阀芯引起主阀芯两端压力差的变化，压力差达到一定时，①口和②口互通。

SYMBOL

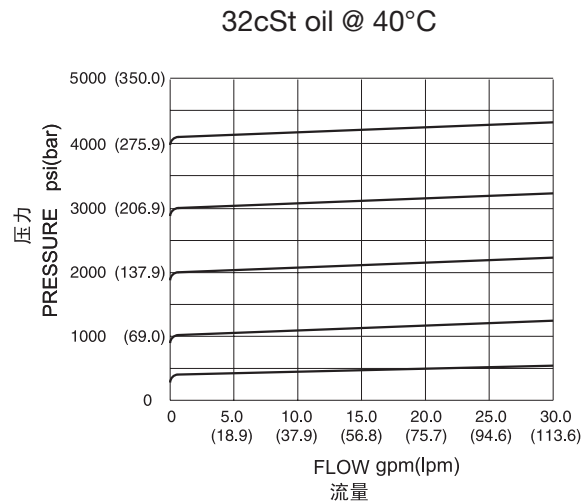


技术参数 SPECIFICATIONS

最大工作压力(Max.Operating Pressure):	350bar
流量(Flow):	See PRESSURE DROP VS. FLOW graph.
内泄漏(Internal Leakage):	82 cc/min. max. to 80% of nominal setting
闭合压力(Reseat Pressure):	85% of crack pressure 开启压力 (crack pressure at 0.95 lpm /0.25 gpm)
弹簧调压范围(Standard Spring Ranges):	7 to 28 bar; preset 预设定: 21 bar 21 to 138 bar; preset 预设定: 69 bar 28 to 207 bar; preset 预设定:138 bar 41 to 350 bar; preset 预设定:207 bar
温度(Temperature):	-40°F to +250°F(-40°C to +120°C)
过滤(Filtration):	See page (参见) N-1
油液(Fluids):	Mineral-based fluids with viscosities of 7.4 to 420 cSt.(矿物油粘度)
插孔(Cavity):	10-2, See page M-2
阀块材料(Body Material):	Steel & Ductile iron rated to 350bar 钢和球铁允许使用最大压力350bar



压力 - 流量曲线 PRESSURE DROP VS.FLOW



订货代号 TO ORDER

LPSRV - 10 - * * - * / ** - * ***

┌───┐
1

┌───┐
2

┌───┐
3

┌───┐
4

┌───┐
5

┌───┐
6

1 功能

LPSRV= 先导式溢流阀
Pilot-Operated Spool-type
Relief Valve

2 规格 Size

10=10 规格

3 弹簧调压范围 Spring Ranges

4=101-400psi(7-28bar)
Preset:300psi(21bar)
20=300-2000psi(21-138bar)
Preset:1000psi(69bar)
30=400-3000psi(28-207bar)
Preset:2000psi(138bar)
50=600-5000psi(41-350bar)
Preset:3000psi(207bar)

4 调节 Adjustment

K= 调节手轮 1-1/2'Dia Knob
内六角调节杆 (Omit for 1/4' Hex Allen head)

5 设定压力 Setting In Bar

空白 Blank= 预设定 Preset
例 Example:0250=250bar

6 阀块油口 Body Porting

空白 Blank= 不带阀块 None
6T=SAE6
8T=SAE8
3G=G 3/8
4G=G 1/2

※ 阀块详见章节 K-4

其它螺纹油口也是可选择的

Other Porting is Available

E

安装尺寸 INSTALLATION DIMENSIONS

Unit=Millimeters

