

# LRBAC

## 直动式溢流阀 (先导级)

### 说明 DESCRIPTION

A cartridge-style direct-acting poppet-type pilot-capacity relief valve

直动座阀式先导阀

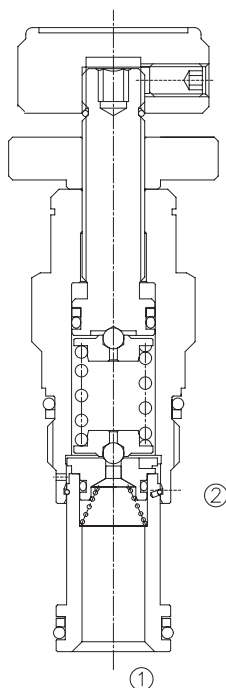
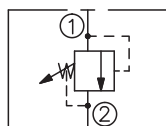
### 工作 OPERATION

Direct-acting, relief cartridges are used to remotely control the pressure setting of other pilot-operated valves.

Because capacity is limited to pilot flow, these valves should be used with other higher flow valves; Back pressure on the tank port ② is directly additive to the valve setting at a 1:1 ratio.

直动式先导溢流阀用于远程控制其他先导式主阀的压力设定控制。由于额定流量的限制，此阀应在匹配的先导流量下与其他主阀一起使用；②口背压会按 1:1 叠加到阀的设定压力上。

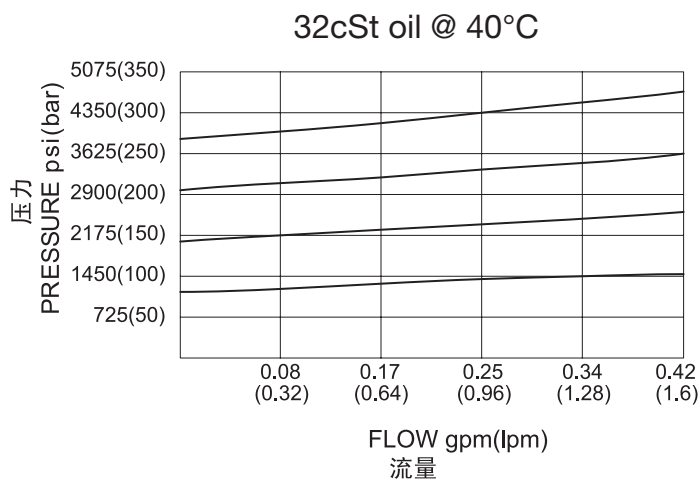
### SYMBOL



### 技术参数 SPECIFICATIONS

最大工作压力(Max.Operating Pressure):	350bar
流量(Capacity):	See PRESSURE DROP VS. FLOW graph.
内泄漏(Internal Leakage):	2 drops/min(滴/分).
响应时间(Response Time):	2 ms
弹簧调压范围(Standard Spring Ranges):	
	A:25psi (1.7 bar) to 3000psi(210 bar), preset预设定:1000psi(70 bar)
	B:25psi (1.7 bar) to 1500psi(105 bar), preset预设定:1000psi(70 bar)
	C:25psi (1.7 bar) to 6000psi(420 bar), preset预设定:1000psi(70 bar)
	D:25psi (1.7 bar) to 800psi(55 bar), preset预设定: 400psi(28 bar)
	E:25psi (1.7 bar) to 400psi(28 bar), preset预设定: 200psi(14 bar)
	W:25psi (1.7 bar) to 4500psi(315 bar), preset预设定:1000psi(70 bar)
温度(Temperature):	-40°F to +250°F(-40°C to +120°C)
过滤(Filtration):	See page (参见) N-1
油液(Fluids):	Mineral-based fluids with viscosities of 7.4 to 420 cSt.(矿物油粘度)
插孔(Cavity):	SUN T-10A, See page M-7
阀块材料(Body Material):	Steel & Ductile iron rated to 350bar 钢和球铁允许使用最大压力350bar

### 压力 - 流量曲线 PRESSURE DROP VS.FLOW



## 订货代号 TO ORDER

**LRB \* C - \* \* \* - \* \***  

┌──┐
┌──┐
┌──┐
┌──┐
┌──┐
┌──┐

1
2
3
4
5
6

- |  |  |  |
|--|--|--|
| <p><b>1 功能</b><br/>LRB= 直动式溢流阀<br/>Direct-Acting Relief Valve</p>                                | <p><b>4 弹簧调压范围 Spring Ranges</b><br/> A=25-3000psi(1.7-210bar) Preset:1000psi(70bar)<br/> B=25-1500psi(1.7-105bar) Preset:1000psi(70bar)<br/> C=25-6000psi(1.7-420bar) Preset:1000psi(70bar)<br/> D=25-800 psi(1.7-55bar) Preset:400psi(25bar)<br/> E=25-400 psi(1.7-28bar) Preset:200psi(14bar)<br/> W=25-4500psi(1.7-315bar) Preset:1000psi(70bar)</p> | <p><b>6 阀块油口 Body Porting</b><br/> 空白 Blank= 不带阀块 None<br/> 6T=SAE6<br/> 8T=SAE8<br/> 2G=G 1/4<br/> 3G=G 3/8</p> |
| <p><b>2 流量 Flow</b><br/>A=1L/min</p>   | <p><b>5 油封 Seal Kits</b><br/> N=Buna N<br/> V=Viton</p>  | <p>※ 阀块详见章节 K-13<br/> 其它螺纹油口也是可选择的<br/> Other Porting is Available</p>   |
| <p><b>3 控制方式 Control</b><br/> L= 标准螺钉调节<br/> Standard Screw Adjustment<br/> K= 调节手轮 Handknob</p> |  |  |

## 安装尺寸 INSTALLATION DIMENSIONS

Unit=Millimeters

