

# LRPGE(导压操作, 快速响应型)

## 先导式溢流阀

### 说明 DESCRIPTION

A cartridge-style fast-acting balanced piston relief valve  
快速响应型, 先导滑阀式溢流阀

### 工作 OPERATION

The valves are normally closed, pressure-limiting valves used to protect hydraulics components from pressure transients. When the pressure at the inlet (port ①) reaches the valve setting, the valve starts to open to tank (port ②), throttling flow to limit the pressure rise. These valves have low pressure rise vs. flow and are very fast.

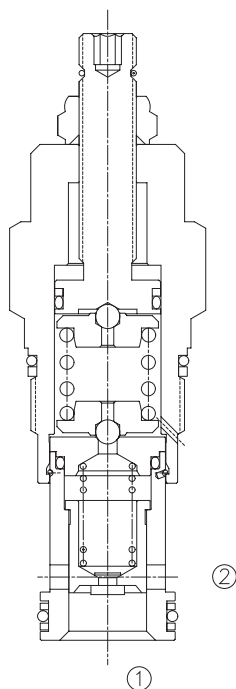
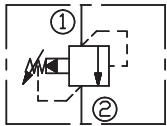
Back pressure on the tank port ② is directly additive to the valve setting at a 1:1 ratio. 快速响应先导式滑阀型溢流阀用于保护系统的压力瞬时过载, 快速启闭时仍能保持系统平稳性。当①口压力超过阀的设定时, ①口到②口溢流过载, 限制系统压力升高, 该阀对压力反应灵敏。

②口背压会按 1:1 叠加到阀的设定压力上。

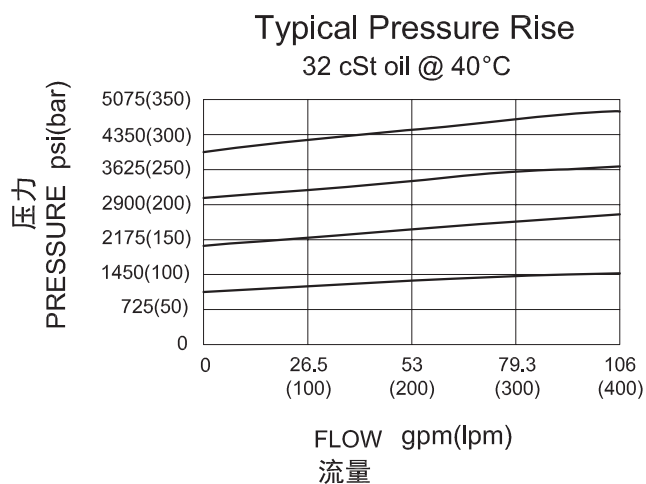
### 技术参数 SPECIFICATIONS

最大工作压力(Max.Operating Pressure):	350bar
流量(Capacity):	200 L/min.
内泄漏(Internal Leakage):	50 cc/min. at 70 bar
响应时间(Response Time- Typical):	2 ms
弹簧调压范围(Standard Spring Ranges):	A 7 to 210 bar, preset预设:70bar B 3.5 to 105 bar, preset预设:70bar C 10.5 to 420 bar, preset预设:70bar D 1.7 to 55 bar, preset预设:28bar E 1.7 to 28 bar, preset预设:14bar W 10.5 to 315 bar, preset预设:70bar
温度(Temperature):	-40°F to +250°F(-40°C to +120°C)
过滤(Filtration):	See page (参见) N-1
油液(Fluids):	Mineral-based fluids with viscosities of 7.4 to 420 cSt.(矿物油粘度)
插孔(Cavity):	SUN T-3A, See page M-9
阀块材料(Body Material):	Steel & Ductile iron rated to 350bar 钢和球铁允许使用最大压力350bar

### SYMBOL



### 压力 - 流量曲线 PRESSURE DROP VS.FLOW



## 订货代号 TO ORDER

**LRP \* E - \* \* \* - \* \***  

1
2
3
4
5
6

- |  |   |  |
|--|---|--|
| <p><b>1 功能</b><br/>LRP= 先导式溢流阀<br/>Fast-acting Pilot-operated Relief Valve</p> | <p><b>4 弹簧调压范围 Spring Ranges</b><br/> A=100-3000psi(7-210bar)<br/> Preset:1000psi(70bar)<br/> B=50-1500psi(3.5-105bar)<br/> Preset:1000psi(70bar)<br/> C=150-6000psi(10.5-420bar)<br/> Preset:1000psi(70bar)<br/> D=25-800psi(1.7-55bar)<br/> Preset:400psi(28bar)<br/> E=25-400psi(1.7-28bar)<br/> Preset:200psi(14bar)<br/> W=150-4500psi(10.5-315bar)<br/> Preset:1000psi(70bar)<br/> Factory Pressure setting established at 15L/min;<br/> 工厂的设定是指溢流阀开启 (流量为 15L/min) 时的压力;</p> | <p><b>5 油封 Seal Kits</b><br/> N= 丁晴橡胶 Buna N<br/> V= 氟橡胶 Viton</p> |
| <p><b>2 流量 Capacity</b><br/>G=200L/min</p>                                     | <p><b>6 阀块油口 Body Porting</b><br/> 空白 Blank= 不带阀块 None<br/> 6T=SAE6<br/> 8T=SAE8<br/> 3G=G 3/8<br/> 4G=G 1/2</p>  |  |

※ 阀块详见章节 K-15  
其它螺纹油口也是可选择的  
Other Porting is Available

## 安装尺寸 INSTALLATION DIMENSIONS

Unit=Millimeters

