

IFC-G38

流量控制阀，压力补偿型，（固定节流孔）

说明 DESCRIPTION

An in-line non-adjustable pressure-compensated flow control valve

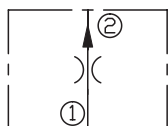
压力补偿型，内嵌式流量阀

工作 OPERATION

The valve maintains a constant flow rate out of ② regardless of load pressure changes in the circuit downstream of ②. The fixed control orifice is factory preset to customer flow specification. Reverse flow (② to ①) returns through the control orifice and is non-compensated.

不管在②口的负载如何变化，②口的流量都能保持在一定的范围内。固定节流孔大小根据客户流量要求而定。反方向流动②到①，没有压力补偿。

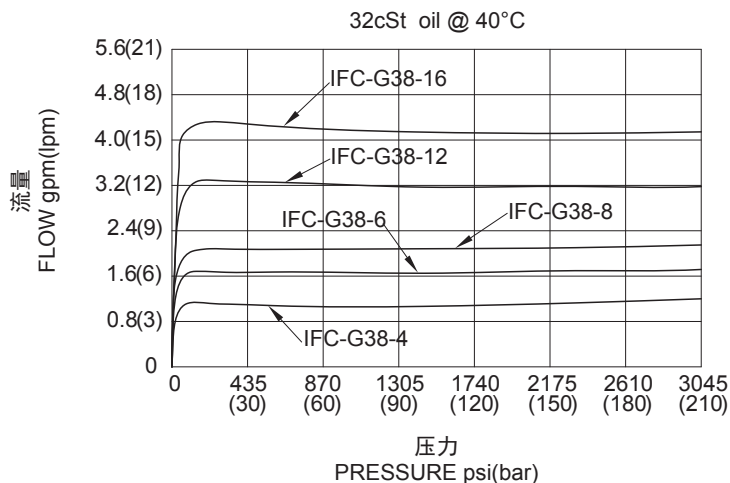
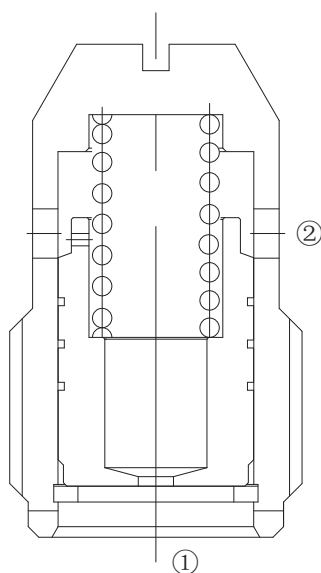
SYMBOL



技术参数 SPECIFICATIONS

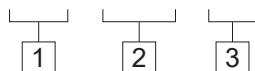
工作压力 (Operating Pressure):	210bar
流量设定 (Flow):	4 l/min.min., 20 l/min.max.
流量控制精度 (Flow Maintenance Accuracy):	Nominal flow \pm 15%
温度 (Temperature):	-40°F to +250°F (-40°C to +120°C)
过滤 (Filtration):	See Page (参见) N-1
油液 (Fluids):	Mineral-based fluids with viscosities of 7.4 to 420 cSt.(矿物油粘度)
阀块材料 (Body Material):	6061-T6 aluminum alloy rated at 207Bar, Steel & Ductile iron rated at 350Bar 6061-T6铝, 允许使用最大压力207Bar 钢和球铁允许使用最大压力350Bar

压力 - 流量曲线 PRESSURE DROP VS.FLOW



订货代号 TO ORDER

IFC - G38 - **



1 功能

IFC= 压力补偿型, 内嵌式流量阀
In-line Non-adjustable
Pressure-compensated
Flow Control Valve

2 规格 Size

G38=G3/8

3 流量 Controlled Flow

4=4 L/min
5=5 L/min
6=6 L/min
8=8 L/min
10=10 L/min
12=12 L/min
14=14 L/min
16=16 L/min
18=18 L/min
20=20 L/min

F

安装尺寸 INSTALLATION DIMENSIONS

Unit=Millimeters

