

LACRV2-16

先导溢流阀 (带反向单向阀功能)

说明 DESCRIPTION

A cartridge-style pilot-operated poppet -type relief valve with reverse free flow check
带反向单向阀功能、先导座阀式溢流阀

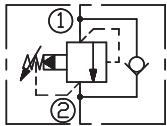
工作 OPERATION

The valve prevents flow from ① to ② until pressure at ① exceeds the set crack pressure and opens the pilot section. The pilot flow creates a pressure differential across the poppet which causes the valve to open allowing flow from ① to ② protecting the circuit from over pressurization.

Pressure at ② overcomes the spring-bias pressure 2 ~ 3bar and allows free flow from ② to ① .

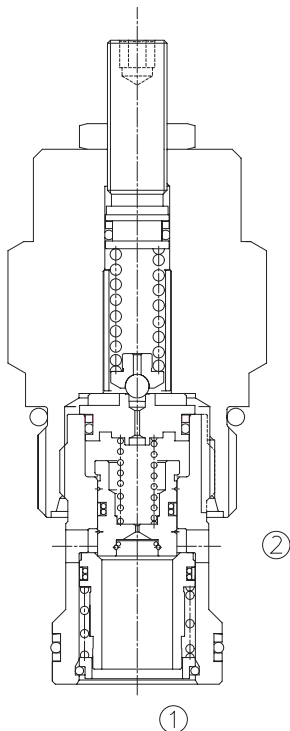
阀体①口和②口不通，直到①口压力超过设定压力且打开先导阀芯。这样，先导阀芯引起主阀芯两端压力差的变化，压力差达到一定时，①口和②口互通。当在②口的压力超过①口 2-3bar，②到①打开。

SYMBOL

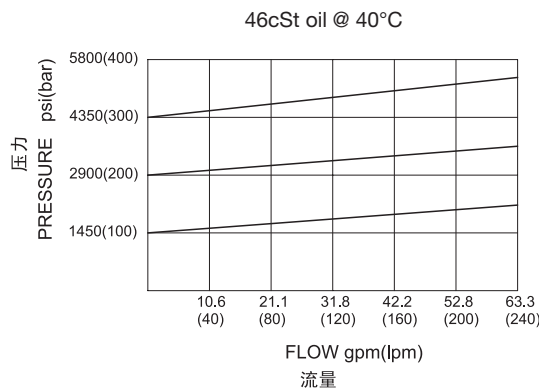


技术参数 SPECIFICATIONS

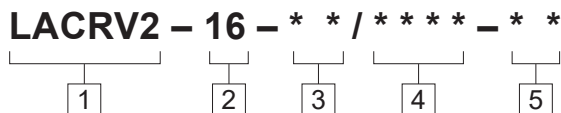
最大工作压力(Max.Operating Pressure):	350bar
流量(Flow):	See PRESSURE VS. FLOW graph.
内泄漏(Internal Leakage):	10 drops/min.(滴/分) max. to 80% of nominal setting
温度(Temperature):	-40°F to +250°F(-40°C to +120°C)
过滤(Filtration):	See page (参见) N-1
油液(Fluids):	Mineral-based fluids with viscosities of 7.4 to 420 cSt.(矿物油粘度)
插孔(Cavity):	16-2, See page M-3
阀块材料(Body Material):	Steel & Ductile iron rated to 350bar 钢和球铁允许使用最大压力350bar



压力 – 流量曲线 PRESSURE DROP VS.FLOW



订货代号 TO ORDER



1 功能
LACRV2= 先导式溢流阀
Adjustable Pilot-Operated Cartridge
Relief Valve

2 规格 Size
16=16 规格

3 弹簧调压 Spring Ranges
30=145-3000psi(10-210bar)
 预设定Preset:1450psi(100bar)
60=145-6000psi(10-420bar)
 预设定Preset:2900psi(200bar)

4 设定压力 Setting In Bar
空白 Blank= 预设定 Preset
例 Example:0250=250bar

5 阀块油口 Body Porting
空白 Blank= 不带阀块 None
12T=SAE 12
16T=SAE 16
6G=G 3/4
8G=G 1

※ 阀块详见章节 K-9
其它螺纹油口也是可选择的
Other Porting is Available

安装尺寸 INSTALLATION DIMENSIONS

Unit=Millimeters

