

LAPV-16-2NCRP

气控单向阀

说明 DESCRIPTION

A pneumatic operated, 2-way, normally closed, poppet - type, directional control valve
 气动操作，二通，常闭型，座阀式，方向控制阀

工作 OPERATION

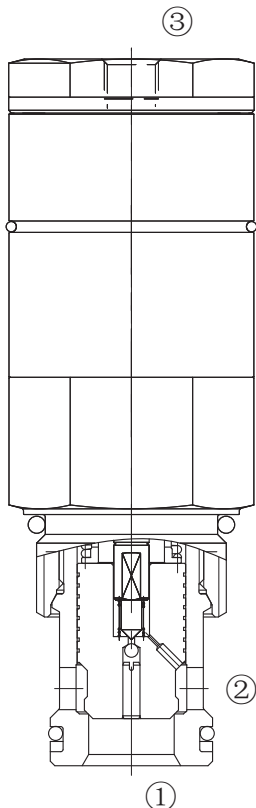
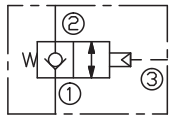
Without air pressure on ③, the valve acts as a check valves, allowing flow from ① to ②, while blocking flow from ② to ①.

With air pressure on ③, the poppet lifts to open the ② to ① flow path. In this mode, flow is also allowed from ① to ②.

当③口不通气压时，①到②相当于单向阀，②到①关闭；

当③口通气压时，②到①，①到②互通。

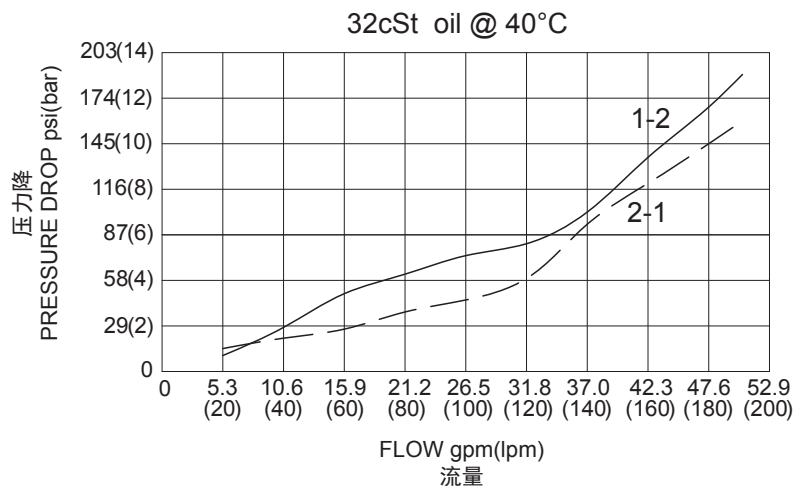
SYMBOL



技术参数 SPECIFICATIONS

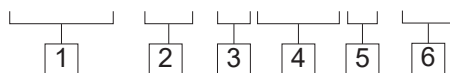
最大工作压力 (Max. Operating Pressure):	210bar
流量 (Flow):	See PRESSURE DROP VS.FLOW graph.
内泄漏 (Internal Leakage):	3 drops/min. (3滴/分) max. at 210 bar
气动压力 (Air Pressure):	5.5 bar
温度 (Temperature):	-40°F to +250°F(-40°C to +120°C)
过滤 (Filtration):	See Page (参见) N-1
油液 (Fluids):	Mineral-based fluids with viscosities of 7.4 to 420 cSt. (矿物油粘度)
插孔 (Cavity):	16-2, See page M-3
阀块材料 (Body Material):	6061-T6 aluminum alloy rated to 207bar, Steel & Ductile iron rated to 350bar 6061-T6铝,允许使用最大压力207bar 钢和球铁允许使用最大压力350bar

压力 - 流量曲线 PRESSURE DROP VS.FLOW



订货代号 TO ORDER

LAPV - 16 - 2 NCR P - * *



1 功能
LAPV= 气控单向阀
Pneumatic-Operated, Poppet-Type
Directional Control Valve

2 规格 Size
16=16 规格

3 流道类型 Flow Path
2= 二通

4 模式
NCR= 常闭, 通气双向流通
Normally Closed, Reverse Flow
Pneumatized

5 类型
P= 锥阀型 Poppet

6 阀块油口 Body Porting
空白 Blank= 不带阀块 None
16T=SAE 16
8G=G 1

※ 阀块详见章节 K-9
其它螺纹油口也是可选择的
Other Porting is Available



安装尺寸 INSTALLATION DIMENSIONS

Unit=Millimeters

