

LBRV2-10-**-**/-4G4



双向溢流阀组

说明 DESCRIPTION

A manifold bi-directional relief valve
双向溢流阀组

工作 OPERATION

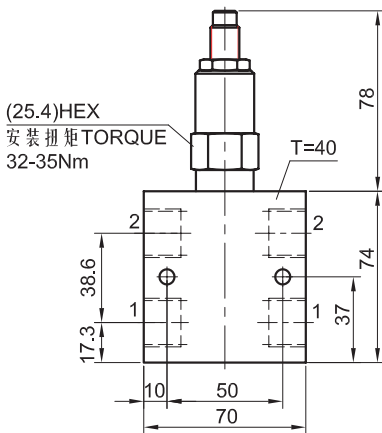
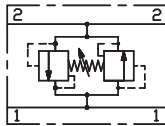
The valve is a direct-acting, dual cross-over relief valve in a single cartridge format. When pressure at either port exceeds the nominal setting value, flow will be transmitted to the opposite port. Back pressure at either port will affect the nominal setting of the opposite port on a 1:1 basis.

For correlation purposes, pre-set value will be measured at port ②. Pressure at port ① will not exceed ± 150 psi from the port ② value.

双向直动式溢流阀，任一油口的压力超过名义设定值时，高压腔向低压腔溢流；低压腔的背压按 1:1 叠加到阀名义设定值上。

预先名义设定值设在②口，①口的溢流压力将不超过②口设定值的 ± 150 psi。

SYMBOL



技术参数 SPECIFICATIONS

工作压力(Operating Pressure): 207bar

弹簧调压范围(Standard Spring Ranges):

Pressure is set at port ②, 14 to 168 bar; 100 to 210 bar;

闭合压力(Reseat Pressure): 80% of crack pressure 开启压力 (crack pressure at 0.95 lpm /0.25 gpm)

双向开启压力最大偏移(Maximum Difference for Crack Pressure in Both Directions): 10.5 bar (150 psi)

流量(Flow): See performance chart

内泄漏(Internal Leakage): when reseat to 80% of crack pressure 闭合压力下: 33 ml/min.

温度(Temperature): -40°F to +250°F (-40°C to +120°C)

过滤(Filtration): See page (参见) N-1

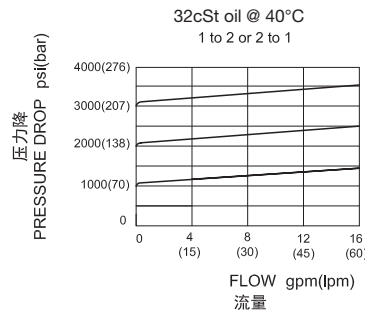
油液(Fluids): Mineral-based fluids with viscosities of 7.4 to 420 cSt.(矿物油粘度)

插孔(Cavity): 10-2, See page M-2

阀块材料(Body Material):

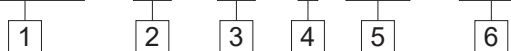
6061-T6 aluminum alloy rated to 207bar, Steel & Ductile iron rated to 350bar

6061-T6铝,允许使用最大压力207bar 钢和球铁允许使用最大压力350bar



订货代号 TO ORDER

LBRV2 - 10 - ** - / ** - 4G4



1 功能

LBRV2= 双向溢流阀
Adjustable, Bi-Directional Relief Valve

4 调节 Adjustment

K= 调节手轮 1-1/2'Dia Knob
内六角调节杆 (Omit for 1/4'Hex Allen head)

6 阀块油口 Body Porting

4G4=4 G 1/2
※ 阀块详见章节 K-4
其它螺纹油口也是可选择的
Other Porting is Available

2 规格 Size

10=10 规格

5 设定压力 Setting In Bar

空白 Blank= 预设定 Preset
EXAMPLE:0150=150Bar

3 弹簧调压 Spring Ranges

24=300 to 2400psi(20 to 168bar) Preset:1000psi(69bar)
30=1450 to 3000psi(100 to 210bar) Preset:2000psi(138bar)