

LBRV-10

双向溢流阀

说明 DESCRIPTION

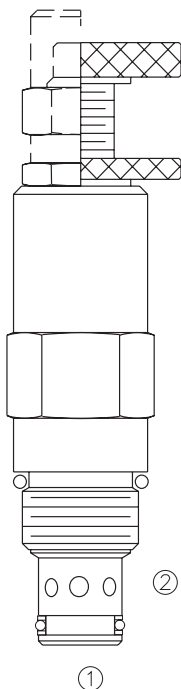
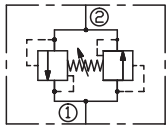
A cartridge-style direct-acting bi-directional relief valve
双向直动式溢流阀

工作 OPERATION

The valve is a direct-acting, dual cross-over relief valve in a single cartridge format. When pressure at either port exceeds the nominal setting value, flow will be transmitted to the opposite port. Back pressure at either port will affect the nominal setting of the opposite port on a 1 :1 basis.

双向直动式溢流阀，任一油口的压力超过名义设定值时，高压腔向低压腔溢流；低压腔的背压按 1 : 1 叠加到阀名义设定值上。

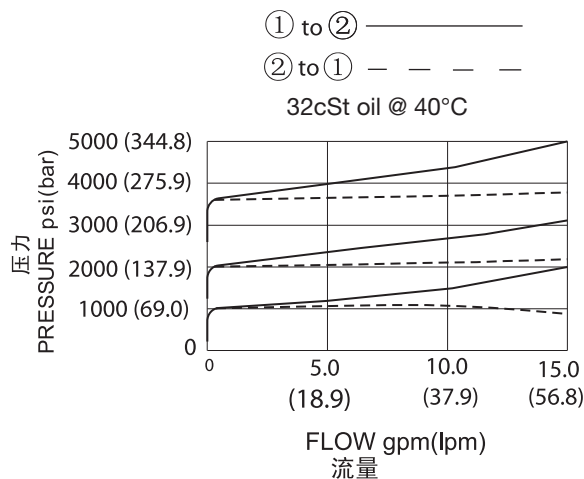
SYMBOL



技术参数 SPECIFICATIONS

工作压力(Operating Pressure):	240bar
弹簧调压范围(Standard Spring Ranges):	Pressure is set at port② 5 to 45 bar; Preset预设定: 21 bar 15 to 150 bar; Preset预设定: 69 bar 50 to 250 bar; Preset预设定:138 bar
闭合压力(Reseat Pressure):	80% of crack pressure开启压力 (crack pressure at 0.95 lpm /0.25 gpm)
流量(Flow):	See performance chart
内泄漏(Internal Leakage):	when reseal to 80% of crack pressure闭合压力下: 3 cc/min.
温度(Temperature):	-40°F to +250°F(-40°C to +120°C)
过滤(Filtration):	See page (参见) N-1
油液(Fluids):	Mineral-based fluids with viscosities of 7.4 to 420 cSt.(矿物油粘度)
插孔(Cavity):	10-2, See page M-2
阀块材料(Body Material):	6061-T6 aluminum alloy rated to 207bar, Steel & Ductile iron rated to 350bar 6061-T6铝,允许使用最大压力207bar 钢和球铁允许使用最大压力350bar

压力 - 流量曲线 PRESSURE DROP VS.FLOW



订货代号 TO ORDER

LBRV - 10 - * * - * / * * * * - * *

1

2

3

4

5

6

- | | | |
|--|---|---|
| <p>1 功能
LBRV= 双向溢流阀
Bi-directional Relief Valve</p> | <p>4 调节 Adjustment
K= 调节手轮 1-1/2'Dia Knob
内六角调节杆 (Omit for 1/4'Hex Allen head)</p> | <p>6 阀块油口 Body Porting
空白 Blank= 不带阀块 None
6T=SAE6
8T=SAE8
3G=G 3/8
4G=G 1/2</p> |
| <p>2 规格 Size
10=10 规格</p> | <p>5 设定压力 Setting In Bar
空白 Blank= 预设定 Preset
例 Example:0150=150Bar</p> | <p>※ 阀块详见章节 K-4
其它螺纹油口也是可选择的
Other Porting is Available</p> |
| <p>3 弹簧调压范围 Spring Ranges
7=100 to 700psi(5 to 45bar)
Preset:300psi(21bar)
21=250 to 2100psi(15 to 150bar)
Preset:1000psi(69bar)
36=900 to 3600psi(50 to 250bar)
Preset:2000psi(138bar)</p> | | |

安装尺寸 INSTALLATION DIMENSIONS

Unit=Millimeters

