

LCV-06-B

单向阀 钢球型

说明 DESCRIPTION

A cartridge-style ball-type check valve

球阀式螺纹插装单向阀

工作 OPERATION

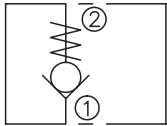
Pressure at ① overcomes the spring-bias ball and allows free flow from ① to ② .

Flow in the opposite direction, from ② to ① ,is blocked by the ball.

当在①口的压力超过开启压力，①到②开启；

在反方向，②到①关闭。

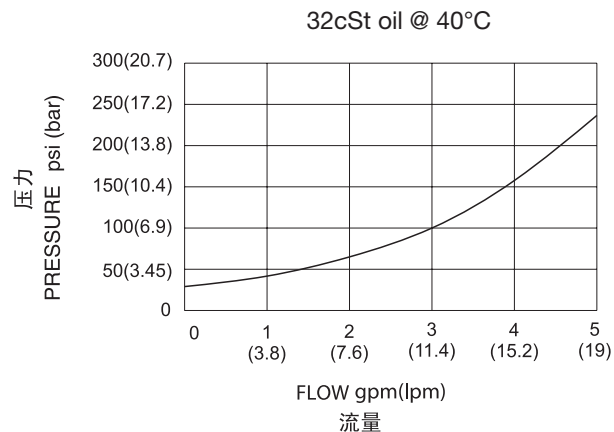
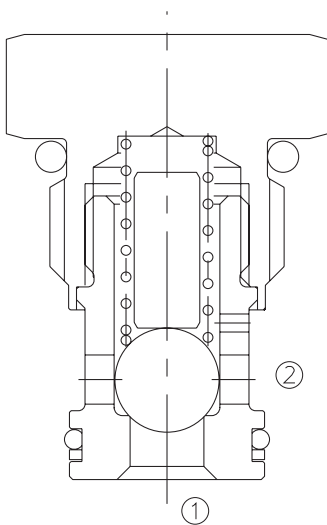
SYMBOL



技术参数 SPECIFICATIONS

工作压力(Operating Pressure):	350bar
流量(Flow):	See PRESSURE DROP VS.FLOW graph.
内泄漏(Internal Leakage):	2 drops/min(滴/分). max. at 350bar
开启压力(Crack Pressures):	0.35=0.35bar 2.1=2.1bar
温度(Temperature):	-40°F to +250°F(-40°C to +120°C)
过滤(Filtration):	See page (参见) N-1
油液(Fluids):	Mineral-based fluids with viscosities of 7.4 to 420 cSt.(矿物油粘度)
插孔(Cavity):	HYDAC FC06-2,See page M-23
阀块材料(Body Material):	Steel & Ductile iron rated to 350bar 钢和球铁允许使用最大压力350bar

压力 – 流量曲线 PRESSURE DROP VS.FLOW



订货代号 TO ORDER

LCV - 06 - B - * * - * *

┌───┐
┌───┐
┌───┐
┌───┐
┌───┐

└───┘
└───┘
└───┘
└───┘
└───┘

1
2
3
4
5

1 功能
LCV= 单向阀 Check Valve

2 规格 **Size**
06=06 规格

3 类型
B= 钢球型 Ball

4 开启压力 **Cracking Pressure**
0.35=0.35bar
2.1=2.1bar

5 阀块油口 **Body Porting**
空白 Blank= 不带阀块 None
4T=SAE4
6T=SAE6
2G=G 1/4
3G=G 3/8

其它螺纹油口也是可选择的
Other Porting is Available

D

安装尺寸 INSTALLATION DIMENSIONS

Unit=Millimeters

