

# LCKCD

## 液控单向阀 (密封导压)

### 说明 DESCRIPTION

A cartridge-style Pilot to open, poppet-type check valve  
锥阀式液控单向阀

### 工作 OPERATION

The valve has a sealed pilot. It allows free flow from port ② to port ① and blocks flow from port ① to port ② or holding a load. Flow will be allowed from port ① to port ② when pressure is applied to pilot ③.

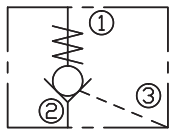
This pilot operated check valve has a 3:1 pilot ratio, meaning that at least one-third of the load pressure held at ① is required at pilot ③ to open the valve.

Pressure at port ② directly opposes pilot pressure.

此阀具有非密封导压。当在②口的压力超过开启压力，②到①开启；在反方向，①到②关闭；

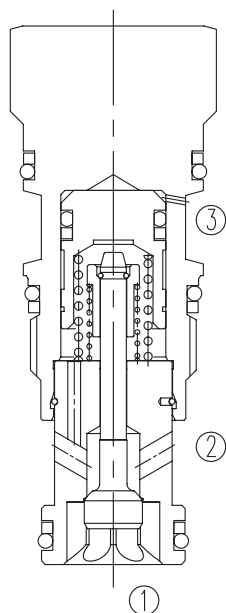
当在③口所需的液压力达到①口负载的 1/3 时，阀芯打开，①和②通，液控比为 3:1。②口压力将直接抵抗先导压力。

### SYMBOL

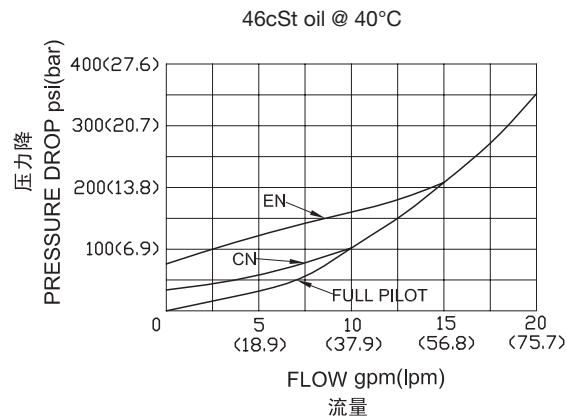


### 技术参数 SPECIFICATIONS

工作压力(Operating Pressure):	350bar
流量(Flow):	See PRESSURE DROP VS.FLOW graph.
内泄漏(Internal Leakage):	1 drops/min.(滴/分) max. at 350bar
开启压力(Crack Pressures):	C=2.0bar A=0.3bar B=1.0bar D=3.5bar E=5.0bar F=7.0bar
控制比(Pilot Ratio):	3:1
温度(Temperature):	-40°F to +250°F(-40°C to +120°C)
过滤(Filtration):	See page (参见) N-1
油液(Fluids):	Mineral-based fluids with viscosities of 7.4 to 420 cSt.(矿物油粘度)
插孔(Cavity):	SUN T-11A, See page M-6
阀块材料(Body Material):	Steel & Ductile iron rated to 350bar 钢和球铁允许使用最大压力350bar



### 压力 - 流量曲线 PRESSURE DROP VS.FLOW



## 订货代号 TO ORDER

**LCK C D - X \* \* - \* \***  

└──┬──┘
└──┬──┘
└──┬──┘
└──┬──┘
└──┬──┘
└──┬──┘
└──┬──┘
  

1
2
3
4
5
6
7

**1 功能**

LCK= 液控单向阀  
Pilot to Open Check Valve

**2 流量 Flow**

C= 标准 60L/min

**3 类型**

D= 密封导压型 Sealed Pilot

**4 控制方式 Control**

X= 常规 Standard Pilot

**5 开启压力 Cracking Pressure**

C=2bar(30psi)  
A=0.3bar(4psi)  
B=1bar(15psi)  
D=3.5bar(50psi)  
E=5bar(75psi)  
F=7bar(100psi)

**6 油封 Seal Kits**

N= 丁晴橡胶 Buna N  
V= 氟橡胶 Viton

**7 阀块油口 Body Porting**

空白 Blank= 不带阀块 None  
6T=SAE6  
8T=SAE8  
3G=G 3/8  
4G=G 1/2

※ 阀块详见章节 K-17-K-22  
其它螺纹油口也是可选择的  
Other Porting is Available

D

## 安装尺寸 INSTALLATION DIMENSIONS

Unit=Millimeters

