

LCBDG

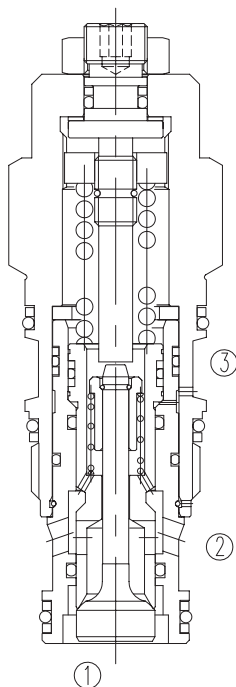
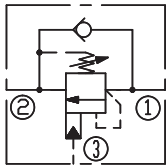
平衡阀

全限流型 /Restrictive

说明 DESCRIPTION

A cartridge-style restrictive counterbalance valve
全限流型平衡阀

SYMBOL



工作 OPERATION

Counterbalance valves with pilot assist are meant for control on overrunning load. The check valve allows free flow from port ② to port ① while a direct-acting, pilot-assisted relief valve controls flow from port ① to port ②. Pilot assist at port ③ lowers the effective setting of the relief valve at a rate determined by the pilot ratio.

带先导协助开启的平衡阀是用来控制超驰负载。它允许油液从方向阀(②口)到负载口(①口)单向自由流通,同时直动式,先导协助溢流阀功能可以控制从①口到②口的液流。③口的先导协助以先导比率的作用系数降低了溢流功能的有效设定值。此阀还被称作运动控制阀或者越过中心阀。

特性 FEATURES

- Counterbalance valves should be set at least 1.3 times the maximum load induced pressure.

最大设定压力至少为最大负载压力的 1.3 倍。

- Full clockwise setting is less than 14 bar.

完全释压情况下, 设定低于 14bar。

- Backpressure at port ② adds to the effective relief setting at a ratio of 1 plus the pilot ratio times the backpressure.

②口的背压按“控制比+1”的倍数加到溢流阀的设定值上即增加值=(1+控制比)×压力值。

- Reseat exceeds 85% of set pressure when the valve is standard set. Setting lower than the standard set pressure may result in lower reseal percentages.

标准设定时, 闭合压力值大于设定压力值的 85%; 低于标准设定, 则闭合压力值的百分比相应降低。

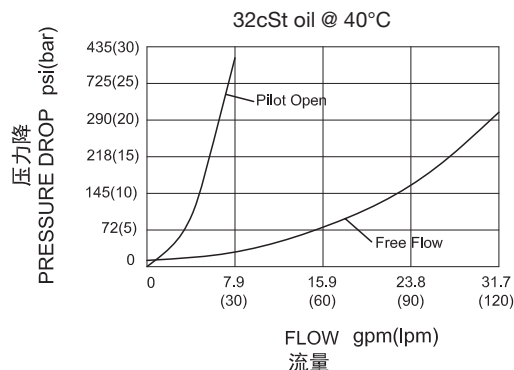
- Factory pressure setting established at 30cc/min(2 in³/min).

工厂的设定是指当溢流阀开启(流量为 30cc/min)时的压力。

技术参数 SPECIFICATIONS

最大设定值(Max. Setting):	350bar
最大负载(Max. Recommended Load Pressure at Max. Setting):	270Bar
流量(Flow):	See PRESSURE DROP VS.FLOW graph.
内泄漏(Internal Leakage):	5 drops/min(滴/分).
控制比(Pilot Ratio):	4.5:1
温度(Temperature):	-40°F to +250°F(-40°C to +120°C)
过滤(Filtration):	See page (参见) N-1
油液(Fluids):	Mineral-based fluids with viscosities of 7.4 to 420 cSt.(矿物油粘度)
插孔(Cavity):	SUN T-2A, See page M-6
阀块材料(Body Material):	Steel & Ductile iron rated to 350bar 钢和球铁允许使用最大压力350Bar

压力 - 流量曲线 PRESSURE DROP VS.FLOW



订货代号 TO ORDER

LCB * * - * * * - * *
 ───┬───┬───┬───┬───┬───┬───┬───┬───
 1 2 3 4 5 6 7

- | | | |
|--|--|---|
| <p>1 功能
LCB= 平衡阀
Counterbalance Cartridge Valve</p> | <p>5 弹簧调压范围 Spring Ranges
J=2000-5000psi(140-350bar)
Preset:3000psi(210bar)(Check:1.7bar)
K=1000-2500psi(70-175bar)
Preset:2000psi(140bar)(Check:1.7bar)
C=2000-5000psi(140-350bar)
Preset:3000psi(210bar)(Check:0.3bar)
D=1000-2500psi(70-175bar)
Preset:2000psi(140bar)(Check:0.3bar)</p> | <p>7 阀块油口 Body Porting
空白 Blank= 不带阀块 None
8T=SAE8
10T=SAE10
3G=G 3/8
4G=G 1/2</p> |
| <p>2 流量 Flow
D=30L/min</p> | <p>6 油封 Seal Kits
N= 丁晴橡胶 Buna N
V= 氟橡胶 Viton</p> | <p>※ 阀块详见章节 K-23—K-24
其它螺纹油口也是可选择的
Other Porting is Available</p> |
| <p>3 控制比 Pilot Ratio
G=4.5:1</p> | | |
| <p>4 控制方式 Control
L= 标准螺钉调节
Standard Screw Adjustment</p> | | |



安装尺寸 INSTALLATION DIMENSIONS

Unit=Millimeters

