

# MHDBV22K2

## 先导溢流阀

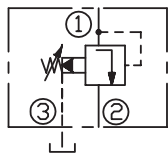
### 说明 DESCRIPTION

A cartridge-style pilot-operated poppet-type relief valve  
先导座阀式溢流阀

### 工作 OPERATION

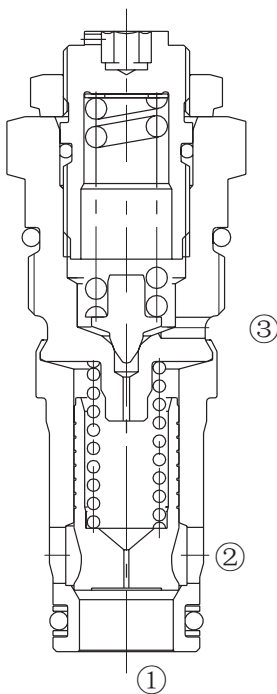
The valve prevents flow from port “P” to port “T” until pressure at port “P” exceeds the set crack pressure and opens the pilot section. The pilot flow creates a pressure differential across the poppet which causes the valve to open allowing flow from port “P” to port “T” protecting the circuit from over pressurization.  
阀的“P”和“T”口不通，直到“P”口压力超过设定压力且打开先导阀芯。这样先导阀芯引起主阀芯两端压力差的变化，压力差达到一定时，“P”口到“T”口互通。

### SYMBOL

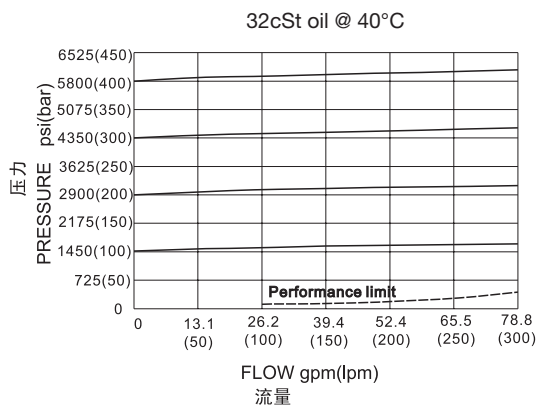


### 技术参数 SPECIFICATIONS

最大工作压力(Max.Operating Pressure):	350bar
流量(Flow):	250L/min.
闭合压力(Reseat Pressure):	85% of crack pressure 开启压力 (crack pressure at 0.95 lpm /0.25 gpm)
温度(Temperature):	-40°F to +250°F(-40°C to +120°C)
过滤(Filtration):	See page (参见) N-1
油液(Fluids):	Mineral-based fluids with viscosities of 7.4 to 420 cSt.(矿物油粘度)
插孔(Cavity):	22K2, See page M-11
阀块材料(Body Material):	Steel & Ductile iron rated to 350bar 钢和球铁允许使用最大压力350bar



### 压力 – 流量曲线 PRESSURE DROP VS.FLOW



订货代号 TO ORDER

## MHDBV – 22K2

1

2

**1 功能**

MHDBV= 先导式溢流阀

Adjustable Pilot-Operated Cartridge Relief Valve

**2 规格 Size**

22K2=22K2 规格

### 安装尺寸 INSTALLATION DIMENSIONS

Unit=Millimeters

